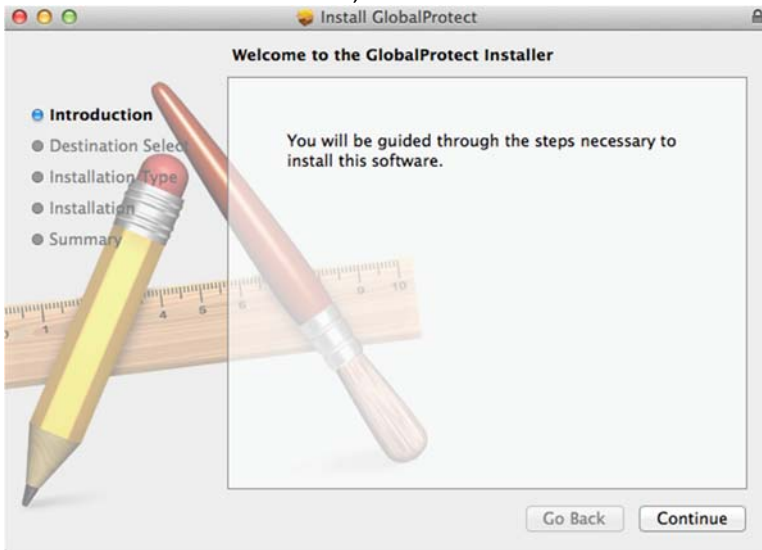


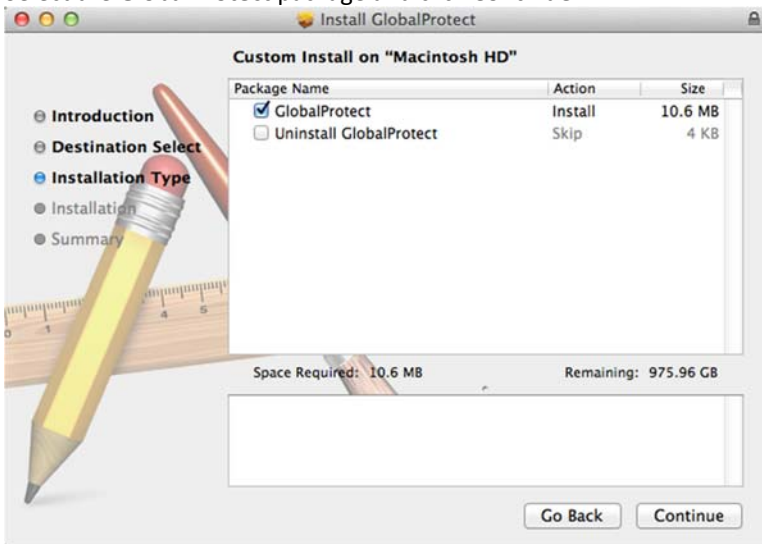
# Installing the GlobalProtect agent on Mac OS X 10.6 or better

## 1. Install the agent:

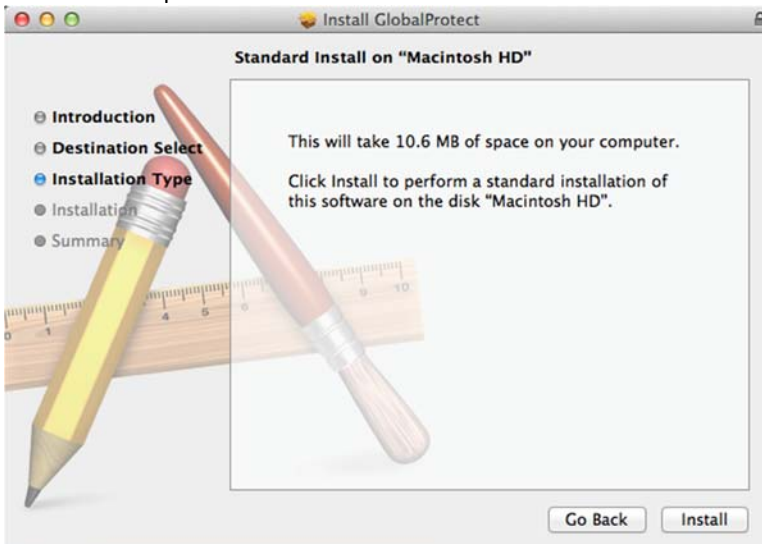
- a. From the GlobalProtect Installer, click **Continue**:



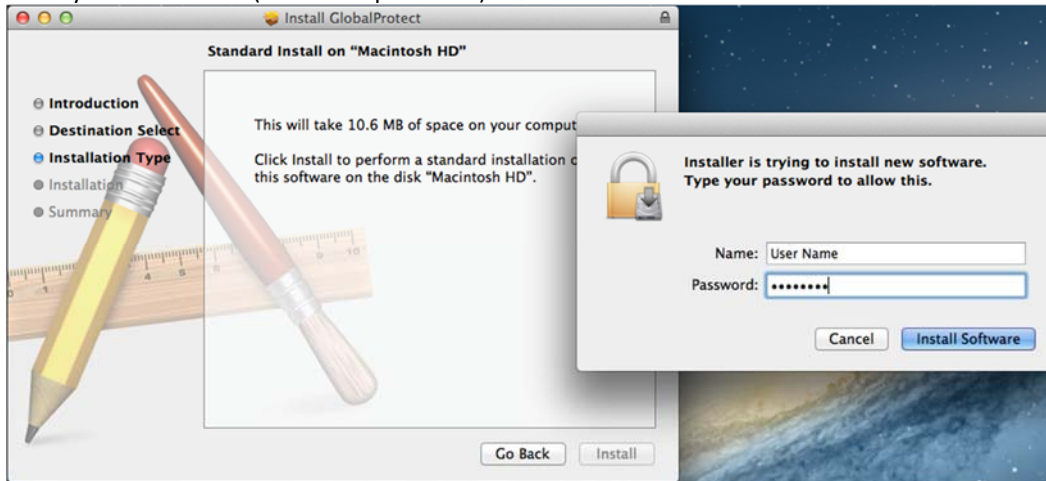
- b. Select the **GlobalProtect** package and click **Continue**:



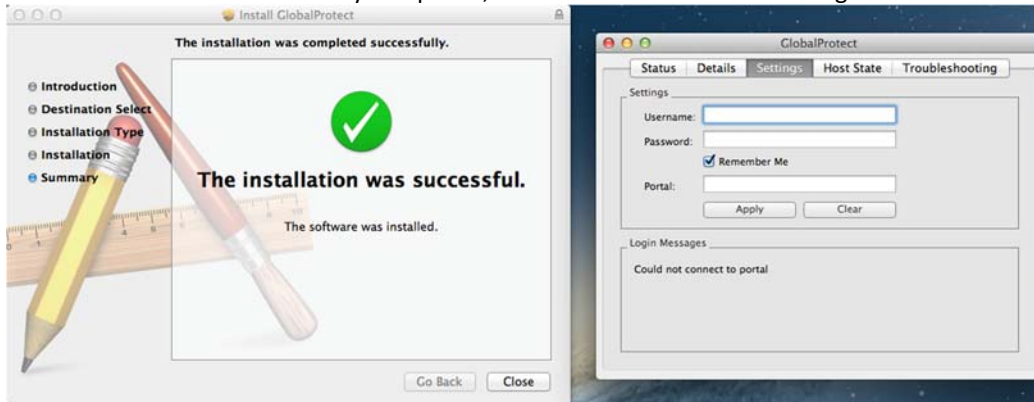
- c. Click **Install** to perform a standard installation of the GlobalProtect software:



- d. Enter your credentials (name and password) to confirm GlobalProtect installation and select **Install Software**:

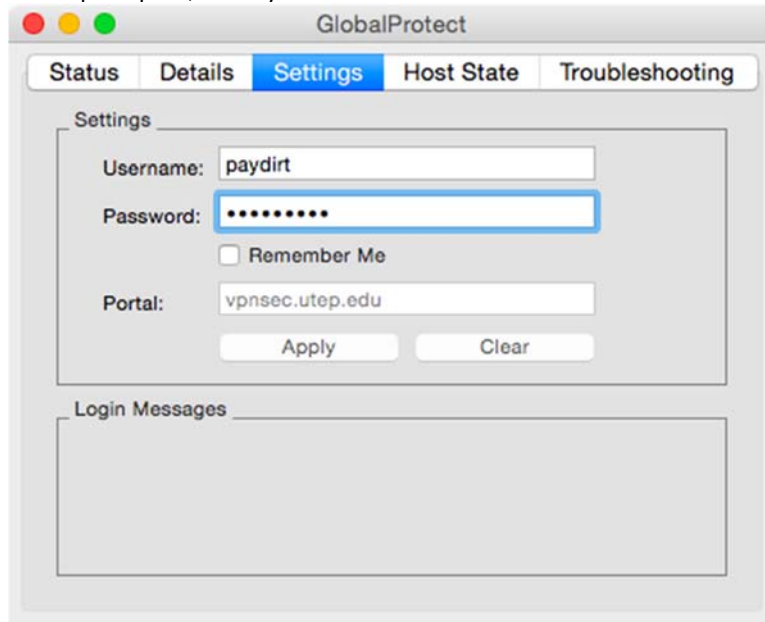


- e. After the installation successfully completes, click **Close**. The GlobalProtect agent starts automatically:



## 2. Log in to GlobalProtect.

When prompted, enter your **Username** and **Password** and then click **Apply**:



### 3. Approve the login

You will receive the following notification on your mobile device setup for Duo push. Select **Approve** to complete the connection.

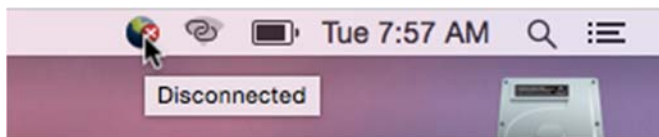


A successful authentication connects you to the corporate network.

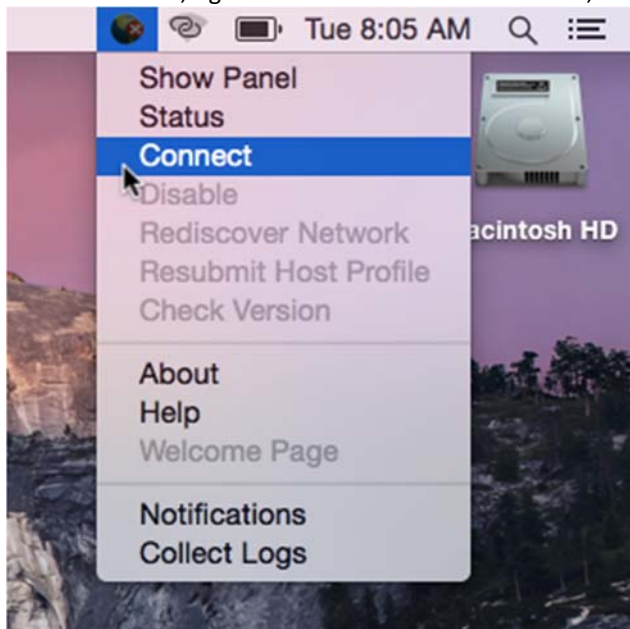
## Use the GlobalProtect Agent

### 1. If you are not connected to GlobalProtect, connect now.

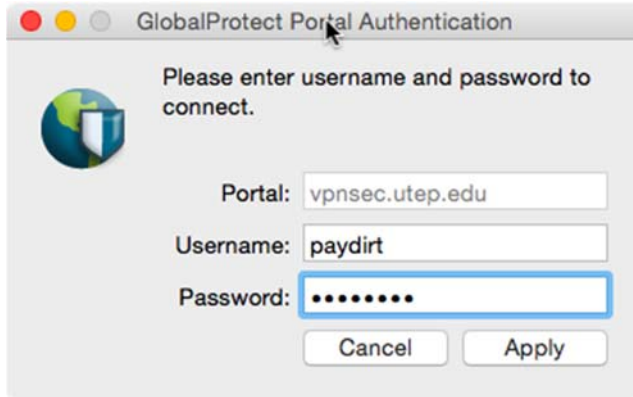
You can tell if you are connected by hovering over the GlobalProtect icon on the menu bar:



- a. In the menu bar, right-click the GlobalProtect icon , and select **Connect**.



- b. If you did not enter your credentials during install phase, you will be prompted to enter credentials, click **Apply**.



A screenshot of a macOS-style dialog box titled "GlobalProtect Portal Authentication". The dialog contains a globe icon and the text "Please enter username and password to connect." Below this, there are three input fields: "Portal:" with the value "vpnsec.utep.edu", "Username:" with the value "paydirt", and "Password:" with a masked password of seven dots. At the bottom, there are two buttons: "Cancel" and "Apply".

- c. When you receive the Duo notification click **Approve**.



## Disconnect from GlobalProtect

1. To disconnect, click the GlobalProtect icon  on the menu bar and select **Disconnect**.